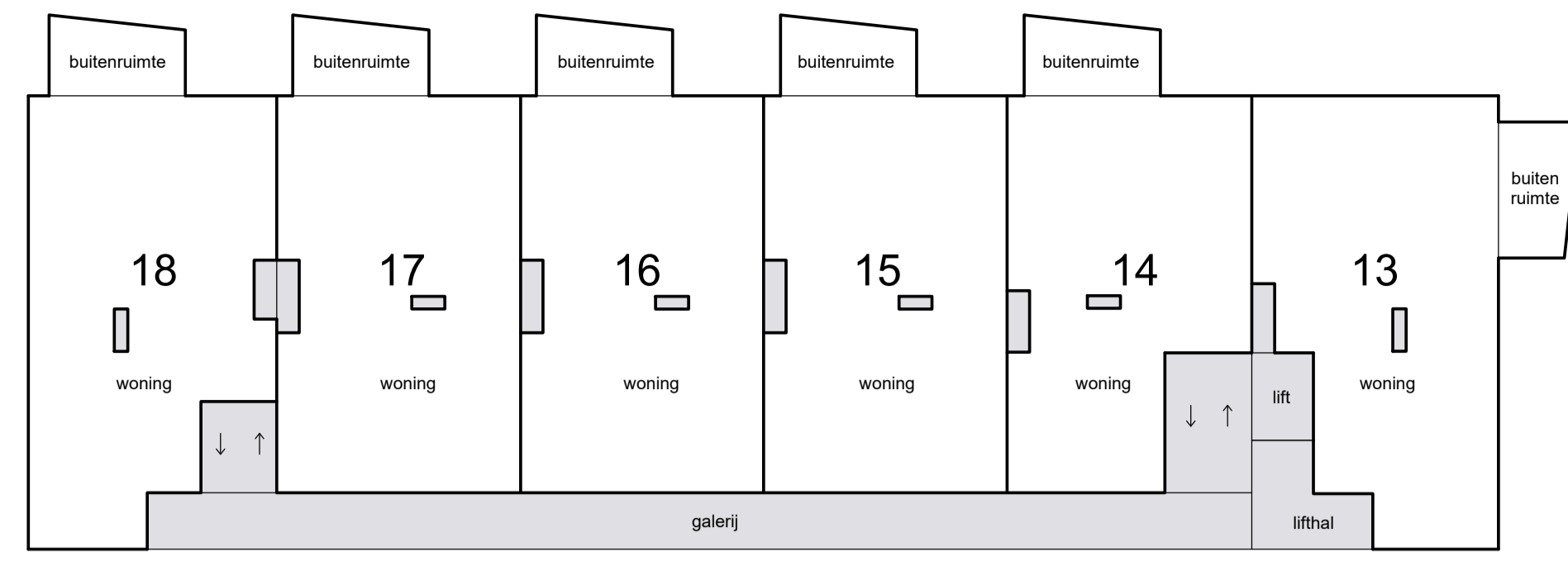


Voorgenomen splitsing in appartementsrechten van de kadastrale percelen: Zoetermeer E 7121 en 7125

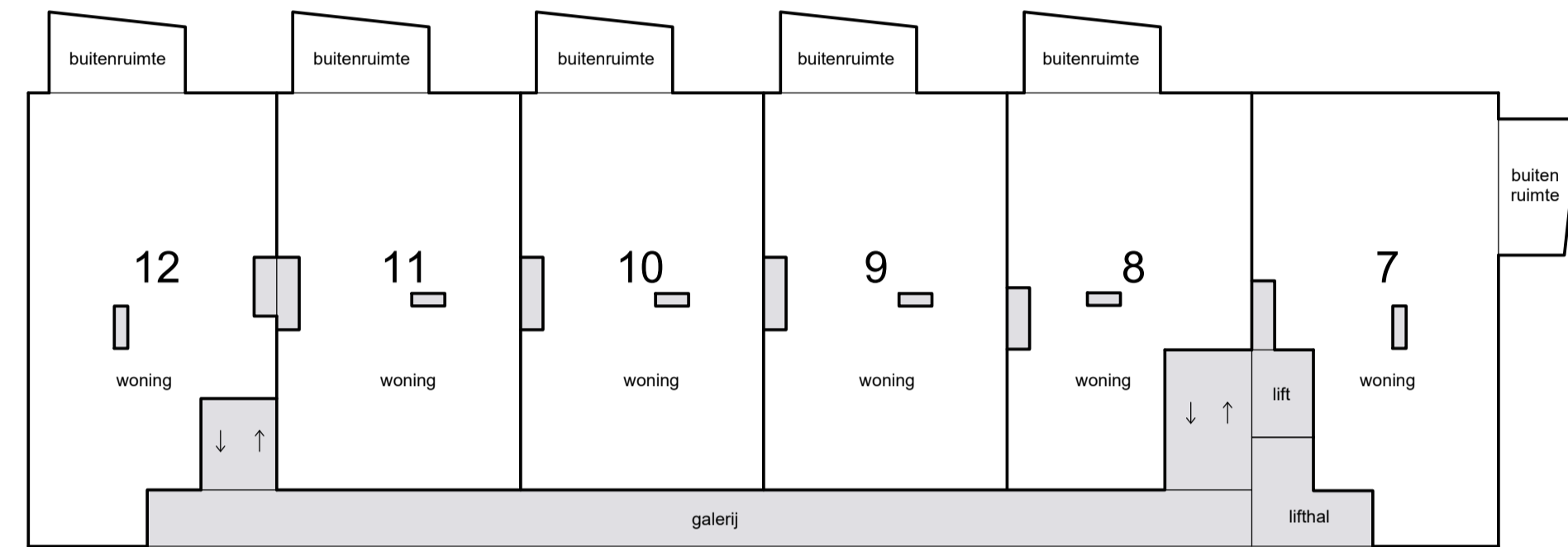


3e etage

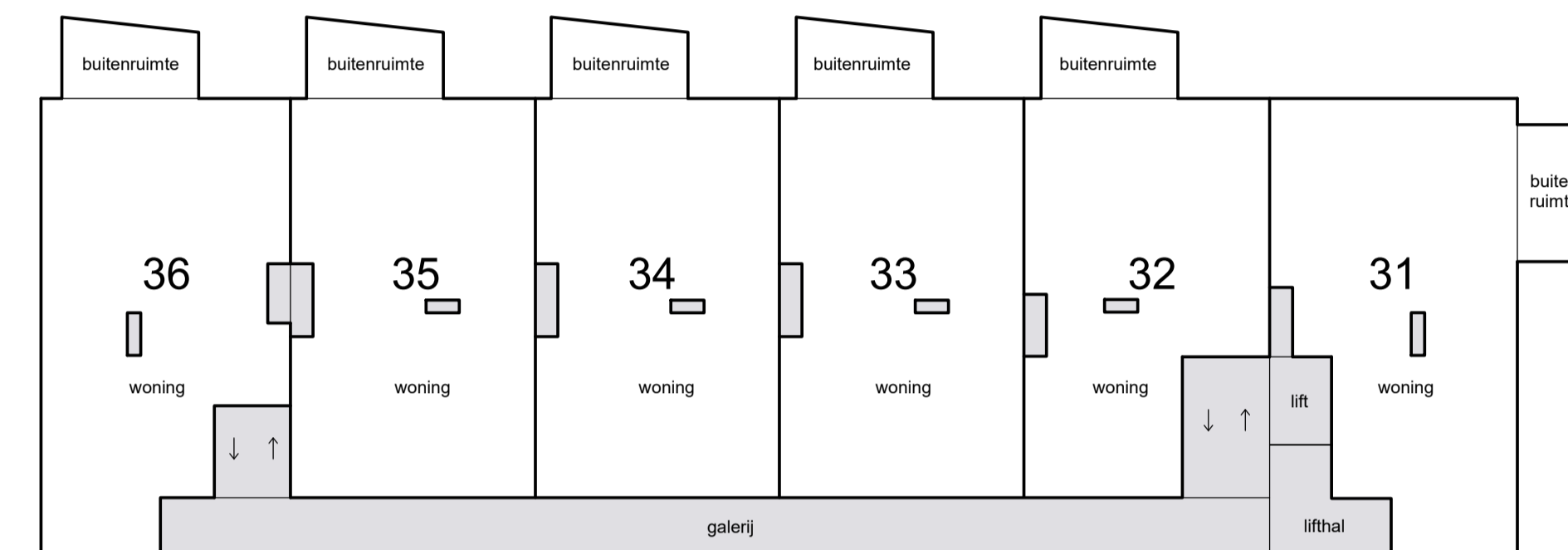


dak

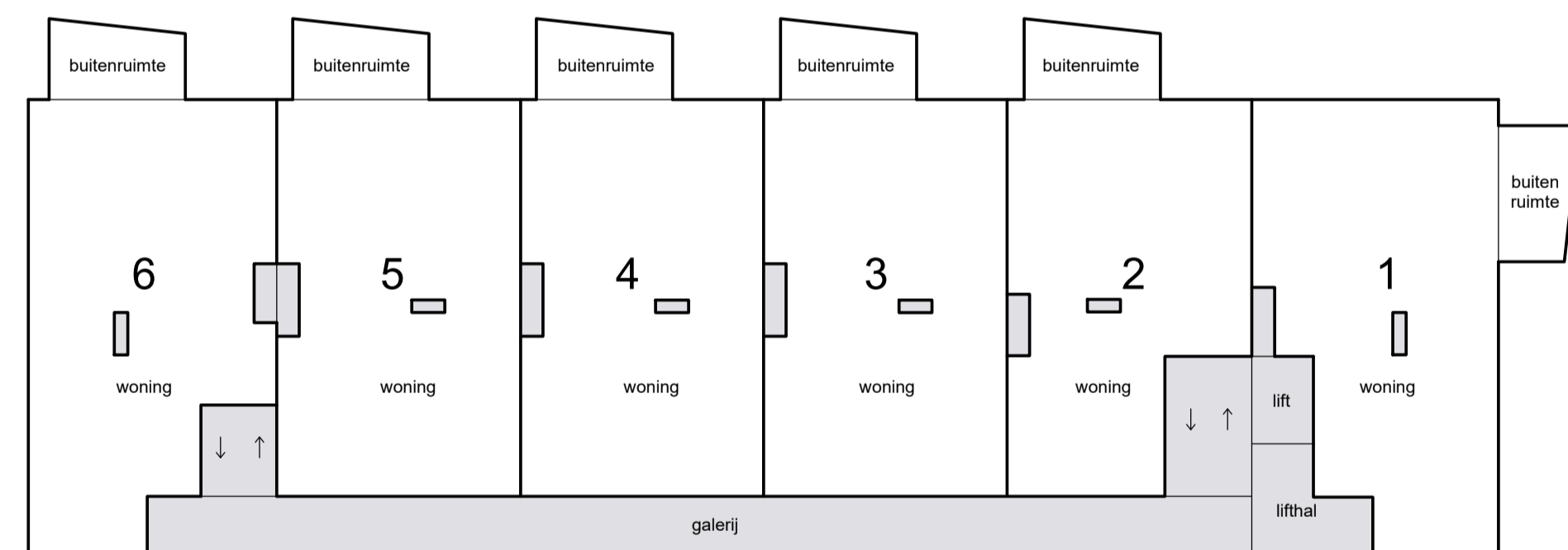
Schaal 1 : 200  
 [shaded box] = Gemeenschappelijk



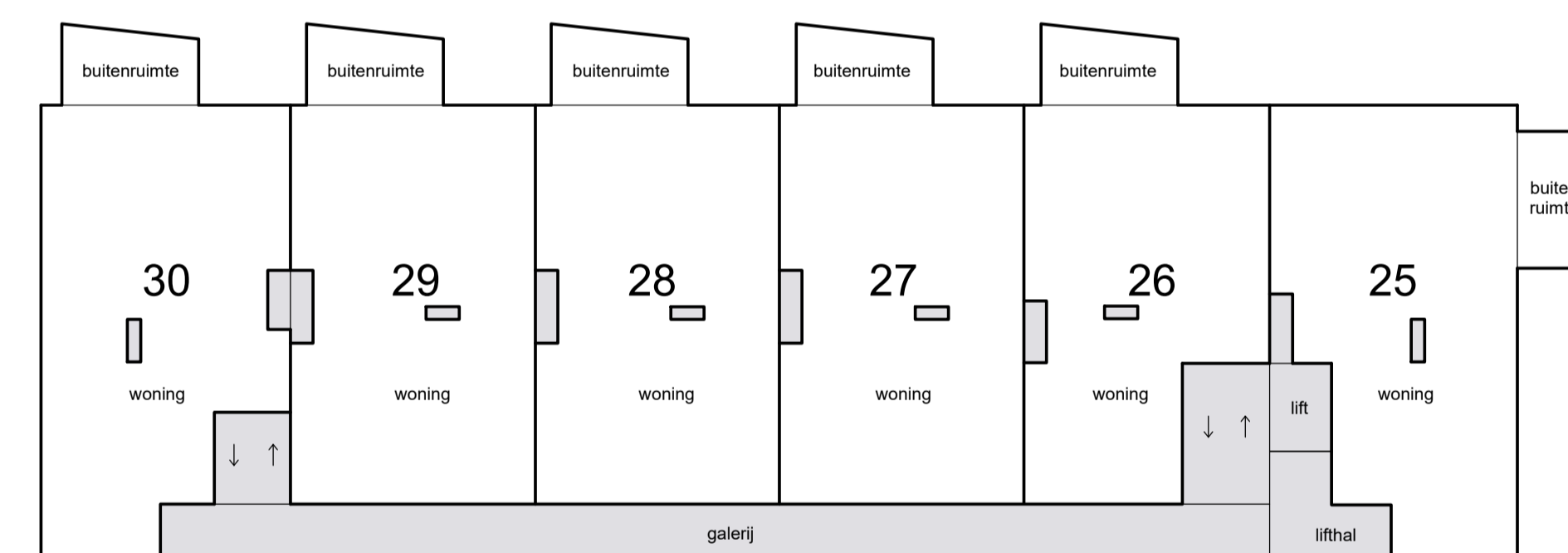
2e etage



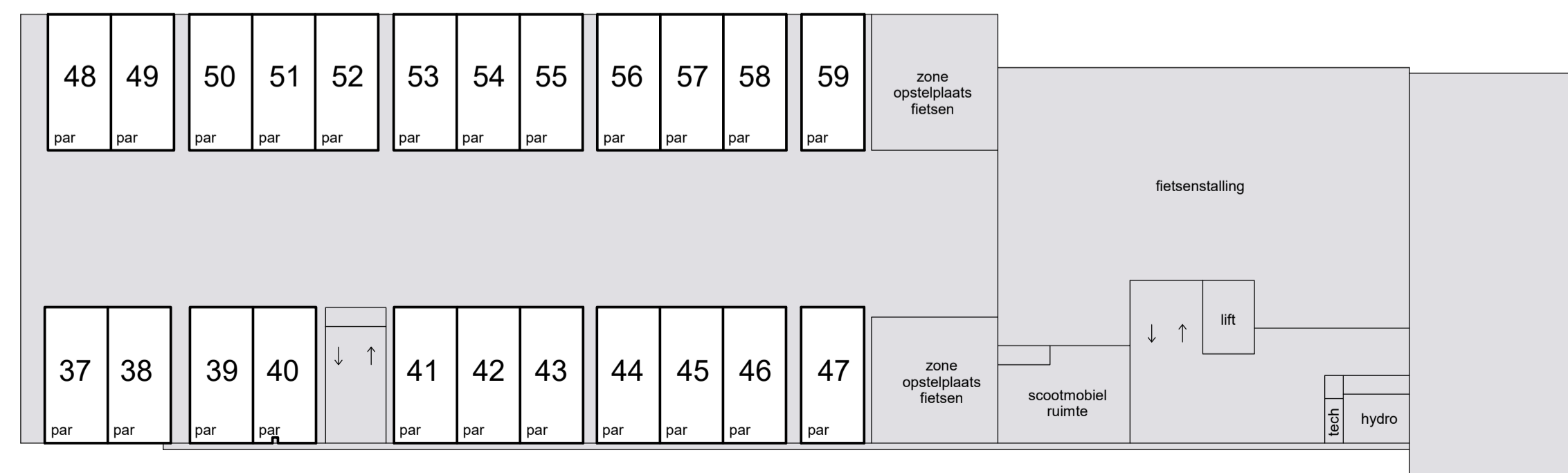
6e etage



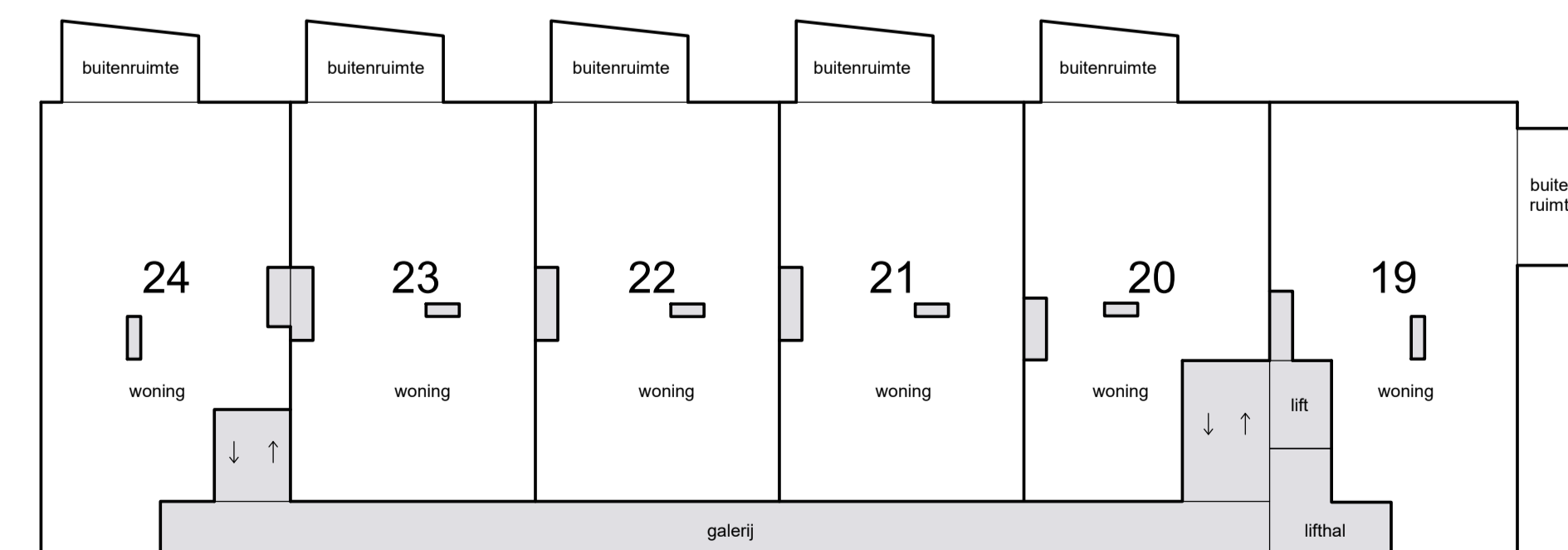
1e etage



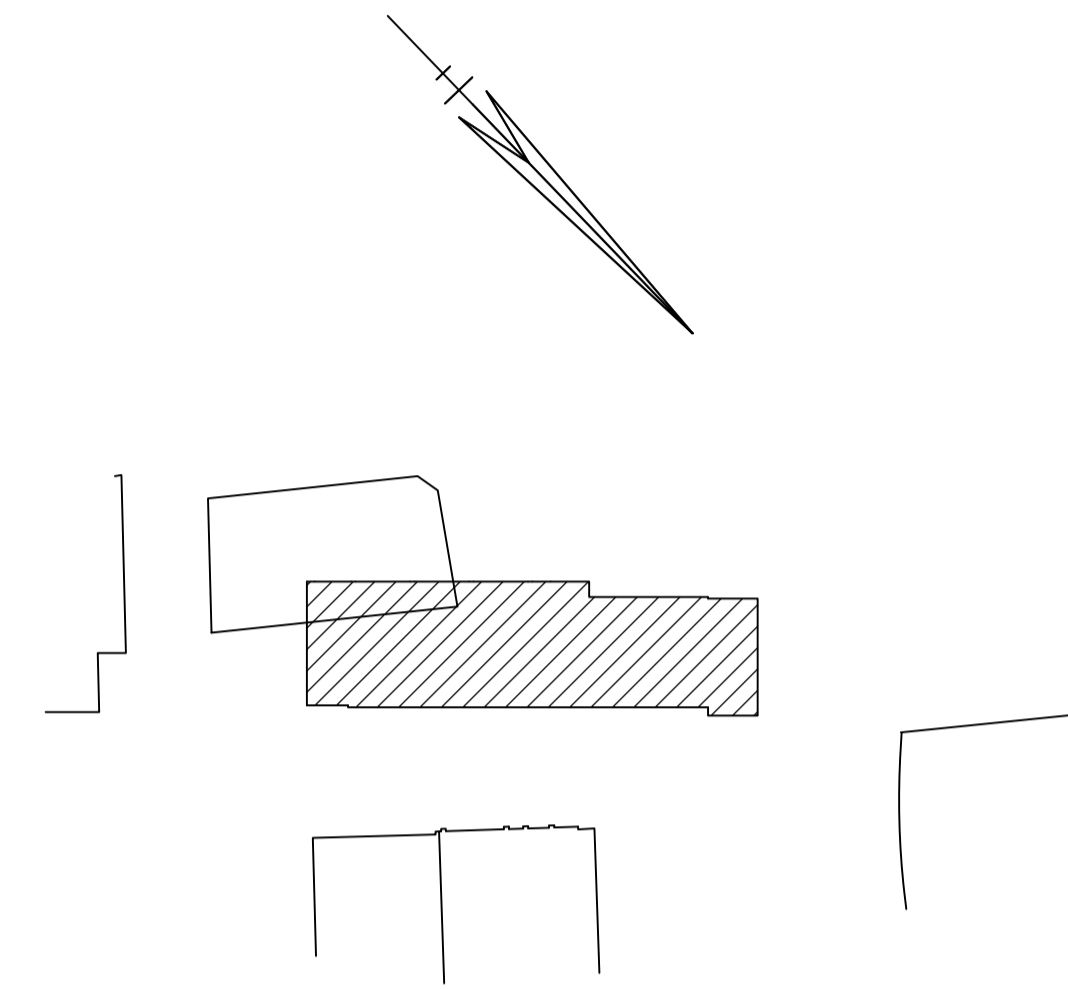
5e etage



begane grond



4e etage



Situatie 1 : 1000 Zoetermeer E

