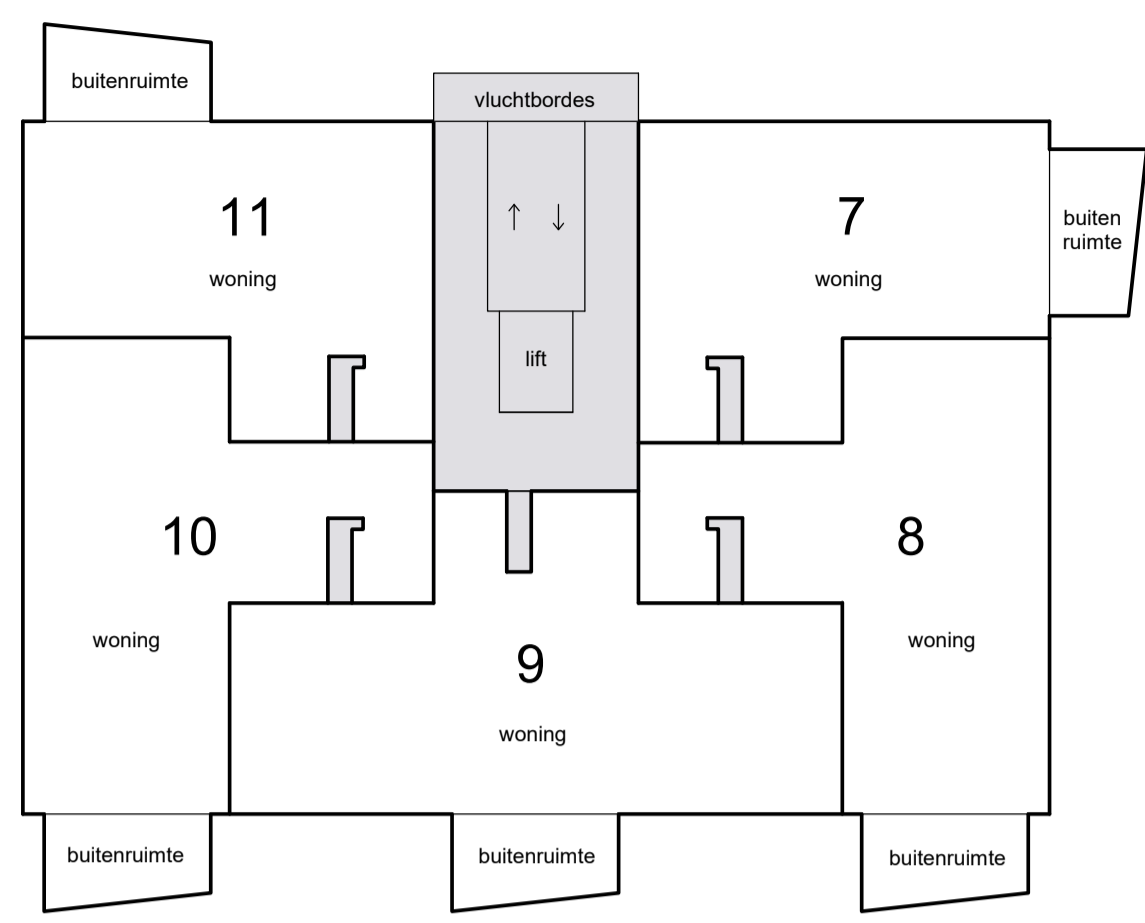
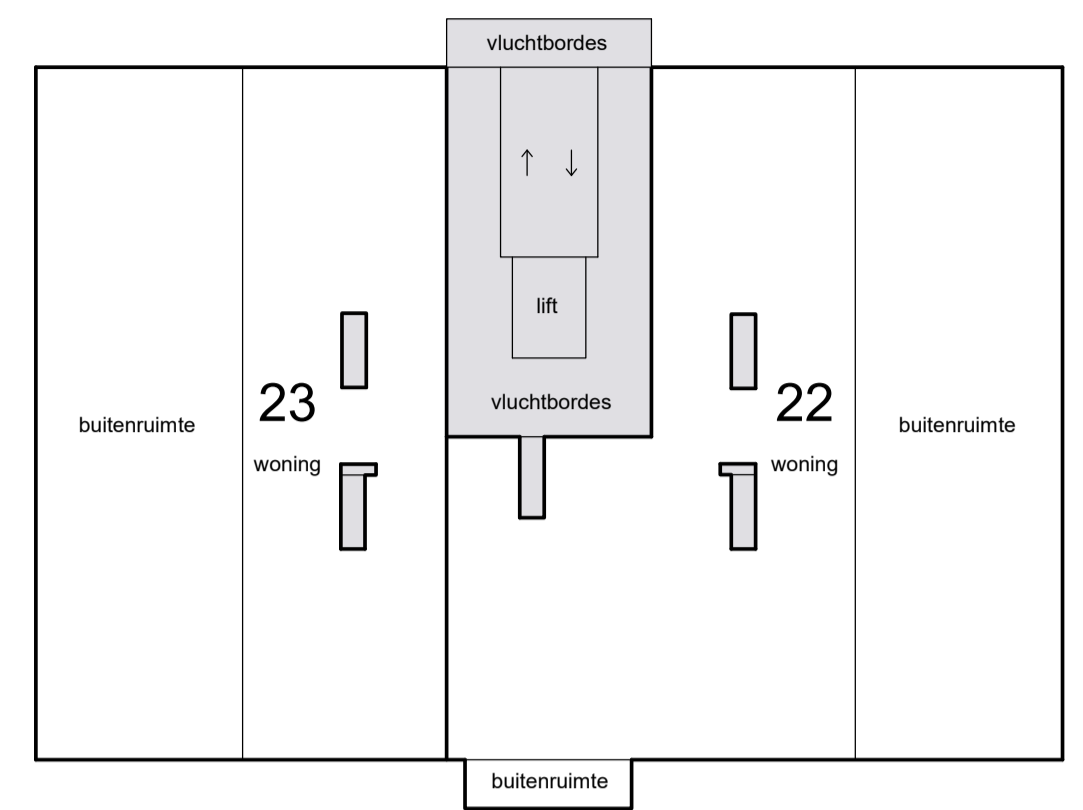


Voorgenomen splitsing in appartementsrechten van het kadastrale perceel: Zoetermeer E 7128

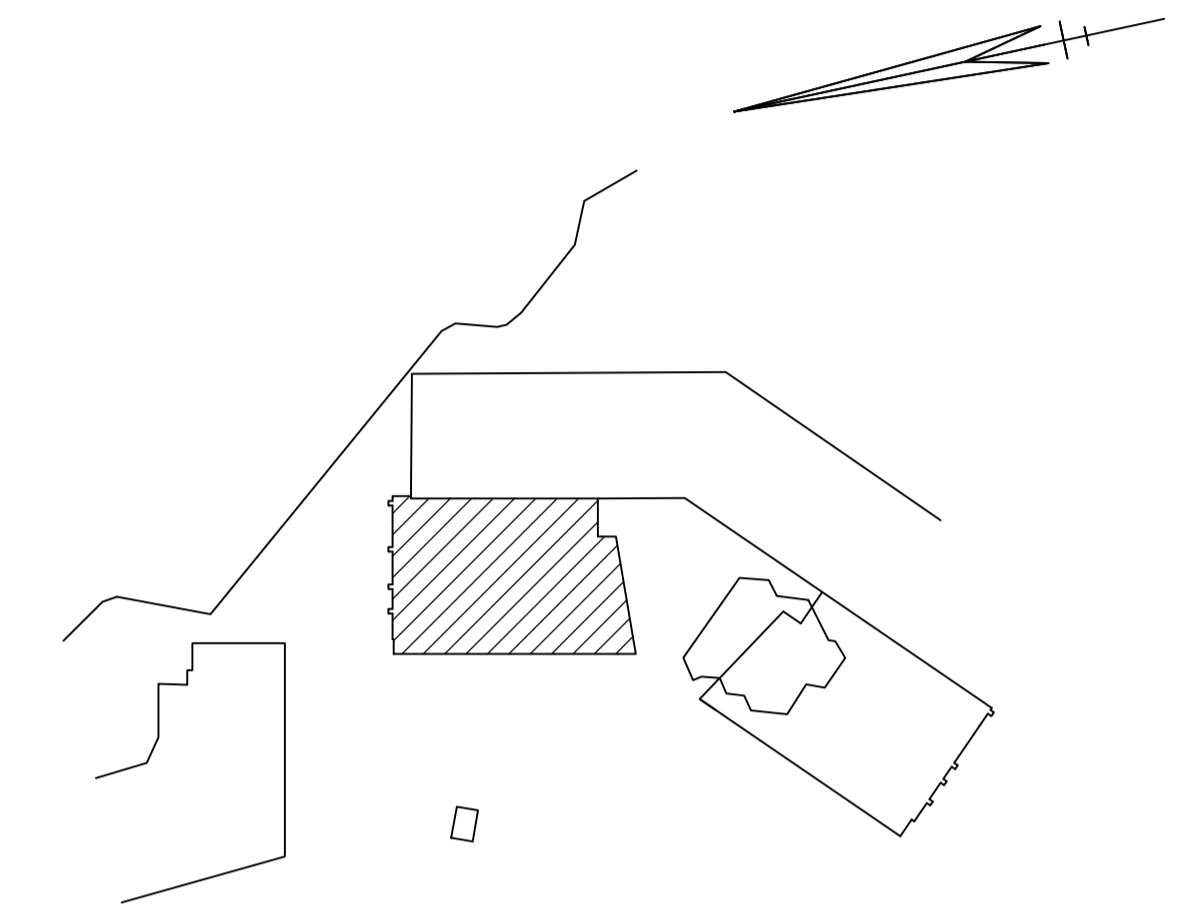
Schaal 1 : 200
 [shaded box] = Gemeenschappelijk



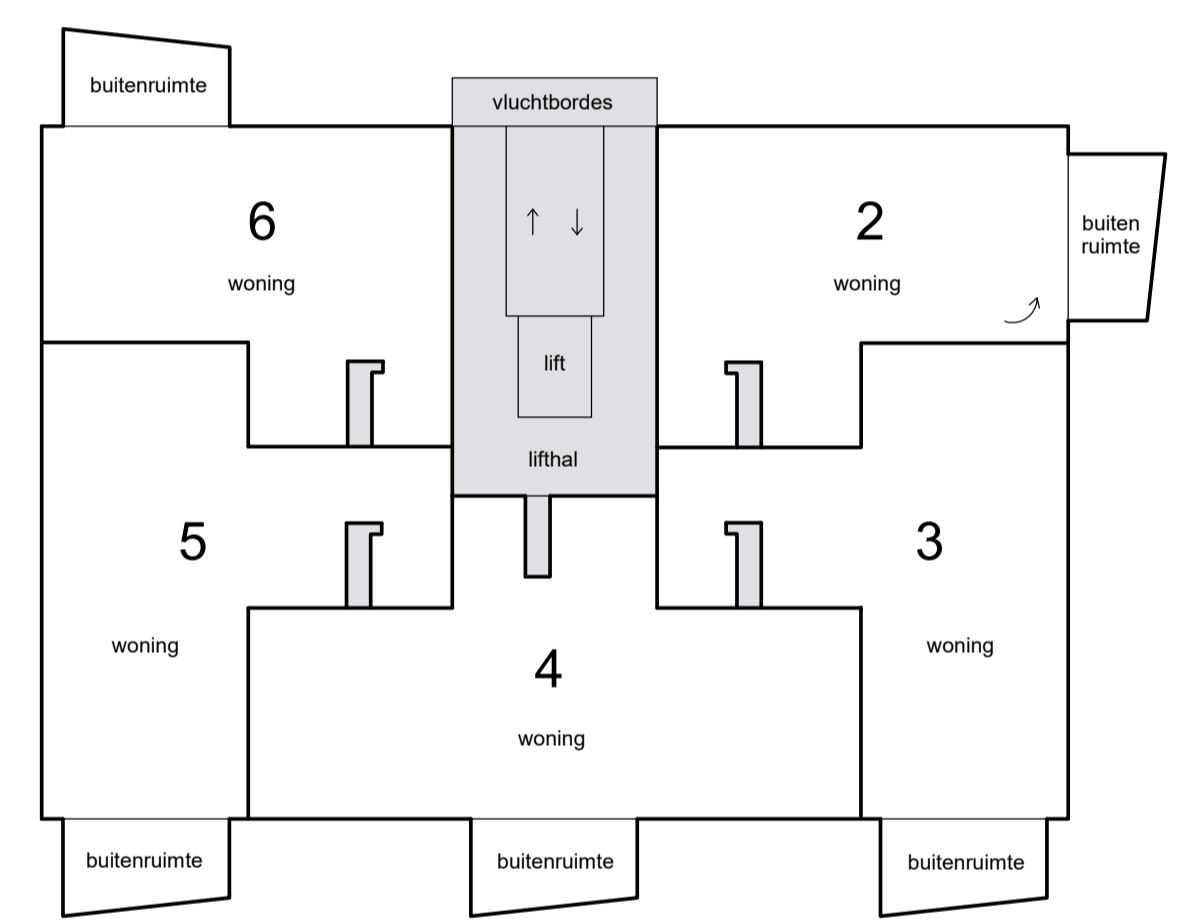
2e etage



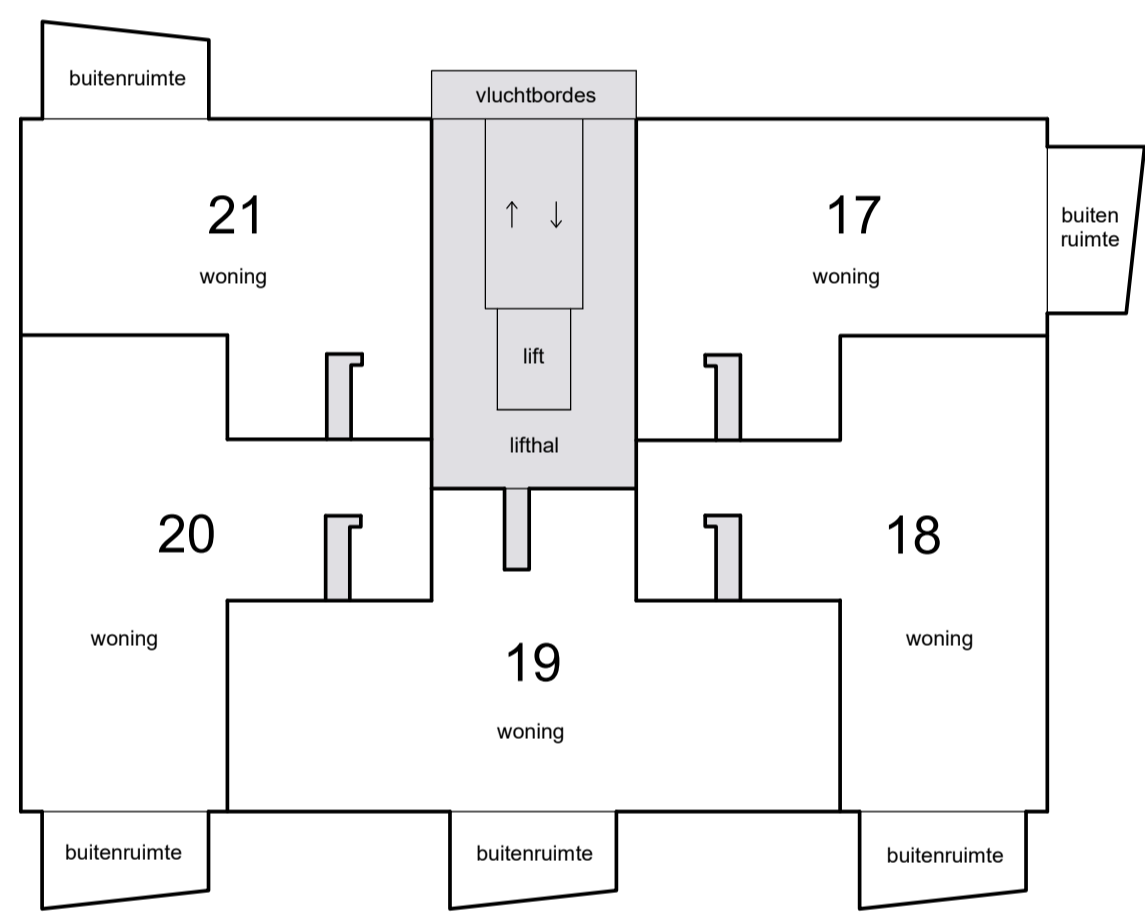
5e etage



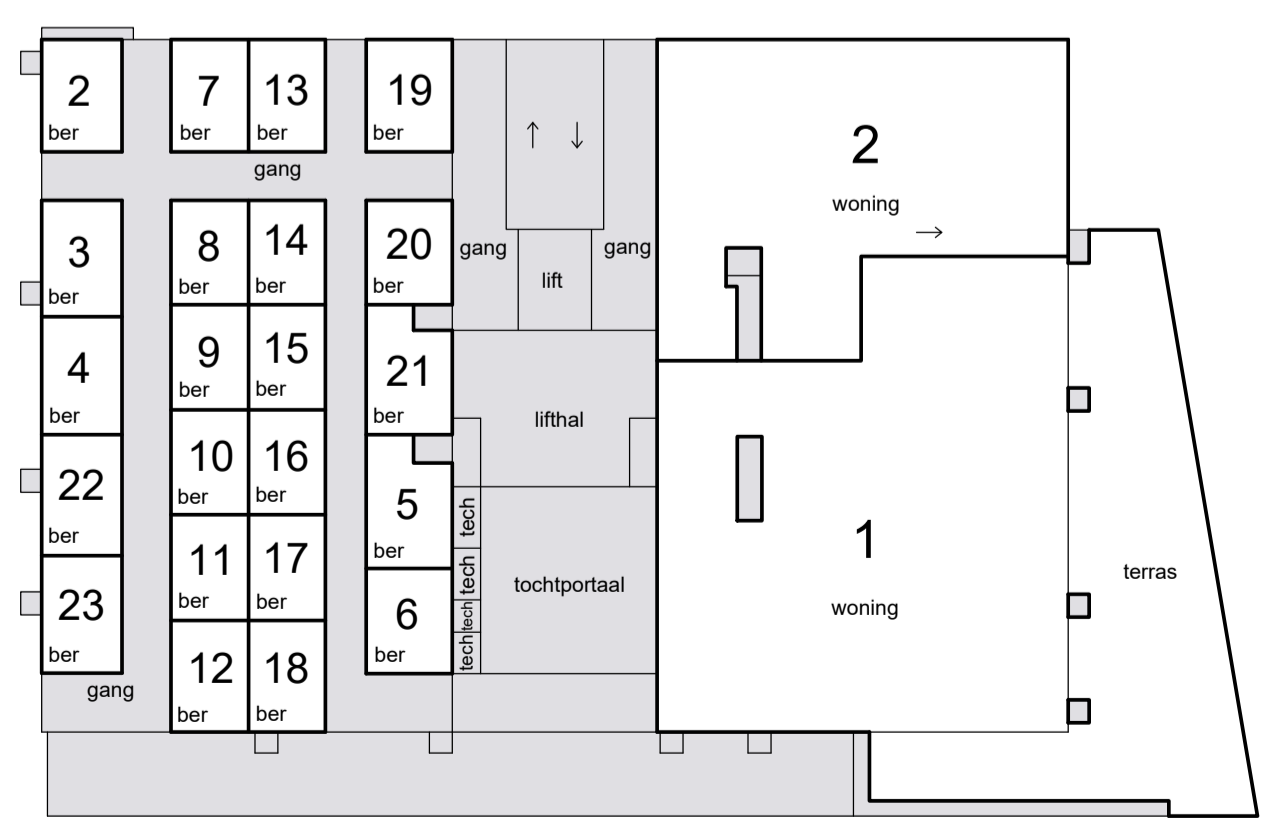
Situatie 1 : 1000 Zoetermeer E 7128



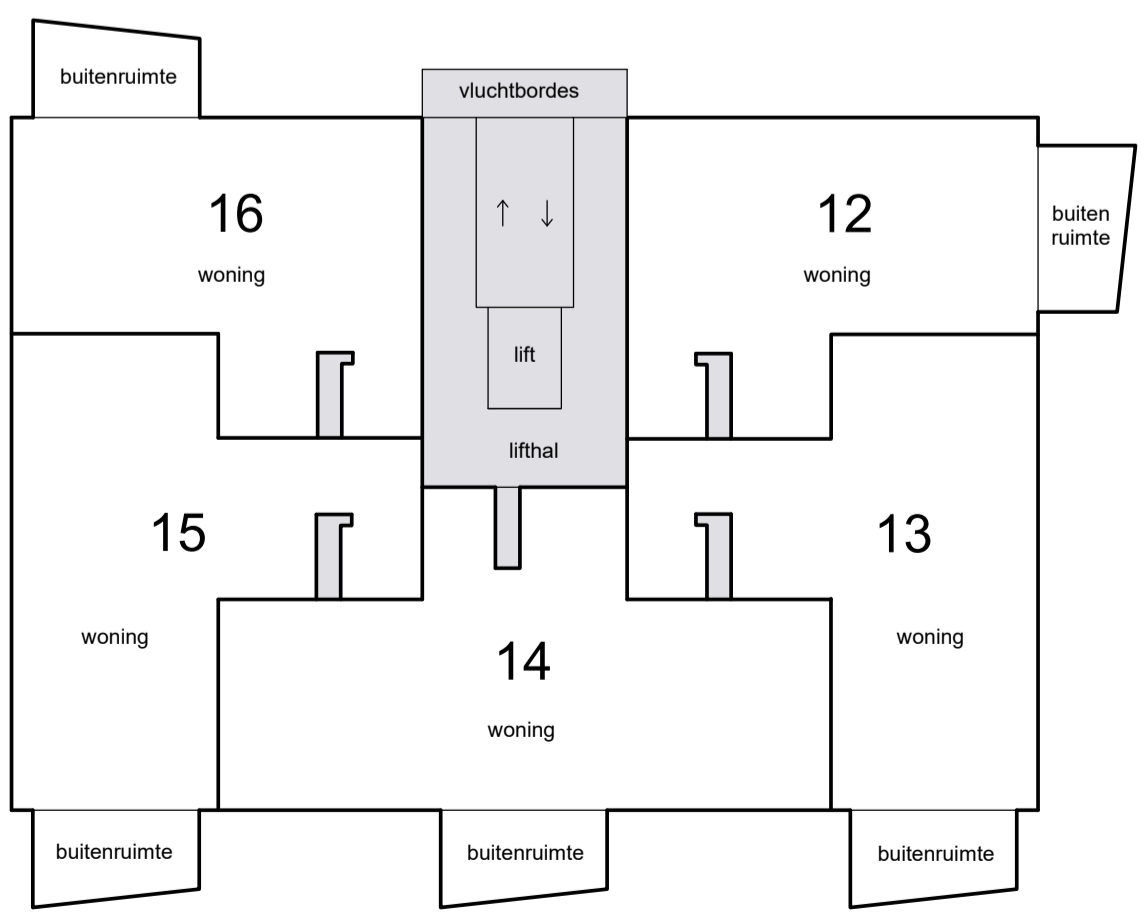
1e etage



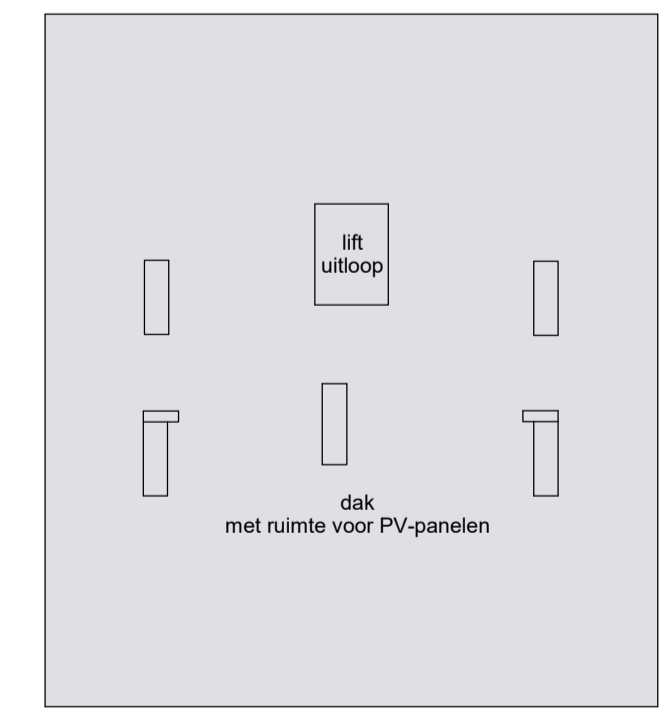
4e etage



begane grond



3e etage



dak

